

### 5.3 Sts. John Creek

There are a number of old mines with significant waste rock in the upper eastern reaches of Sts. John Creek. The adits are all dry and the waste rock erosion small. Lower, the Wild Irishman mine has a draining adit and significant waste rock. The flow from the adit is along the north side of the waste rock. Figure 34 shows the lower half of the upper waste piles and Figure 35 shows the Wild Irishman Mine adit flow. In figure 34 the Wild Irishman Mine is the lowest waste pile shown. Figure 36 shows the flow of the adit on the north side of the waste rock pile.



Figure 34

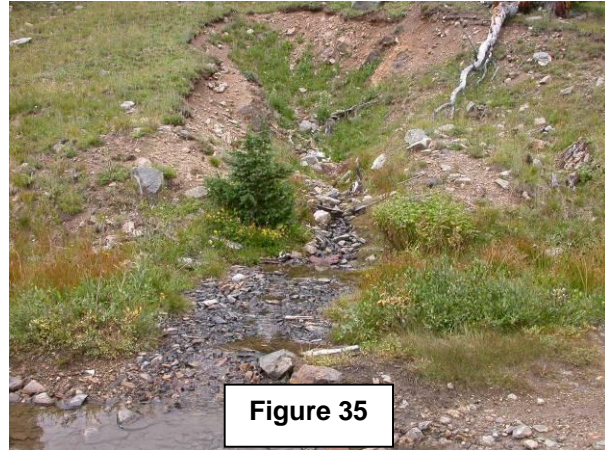


Figure 35

Slightly lower in the basin, just before the road to the Wild Irishman Mine crosses the mainstem, another road takes off to the west to another old mine. This mine has a slightly draining adit which goes directly into the stream. The flow is constant, but relatively low. The adit has been closed. The flow could be treated in a passive treatment system, although the benefits from doing so would be small.



Figure 36

There is a road to the east that takes off about half the way up the main part of the drainage. It serves an old mine with a draining adit. The area around the mine is privately

owned and a cabin of sorts has been built below the mine area. This mine is actually just north of the Wild Irishman Mine in a sub-drainage that starts only a few hundred yards north of the Wild Irishman Mine. Figure 37 shows this draining adit. There is considerable waste rock in the area. Flow is across the waste rock and then down to an eastern tributary.

The waters of Sts. John Creek are good to just above the Sts. John Mine. The impacts from the mines discussed to this point are very small on the water quality of Sts. John Creek.



**Figure 37**

Only a few hundred yards from where an eastern tributary discussed above flows into Sts. John Creek is the Sts. John Mine and Mill site. This is one of the major problems in the Snake River Basin. The mine has a significantly draining adit, which is flowing across waste rock and tailings on its way to the stream. Further, water is seeping from the stream into areas disturbed by milling and the tailings from the mill contaminate the stream for hundreds of yards below the mine area. Major cleanup of the site is needed. Waste rock needs to be consolidated. The waters

leaking from the stream need to be captured and channeled back into the stream before heading into a tailings area. The adit flow needs treatment. The tailings in the area of the mine need to be removed or consolidated and covered.

Figure 38 shows the Sts. John Mine adit. Flow splits, with the majority going north and the rest heading across waste rock to the south. Figure 39 shows the north flow and Figure 40 shows the south flow. Figure 41 shows the north flow near its confluence with Sts. John Creek in August, 2007.



**Figure 38**



**Figure 39**

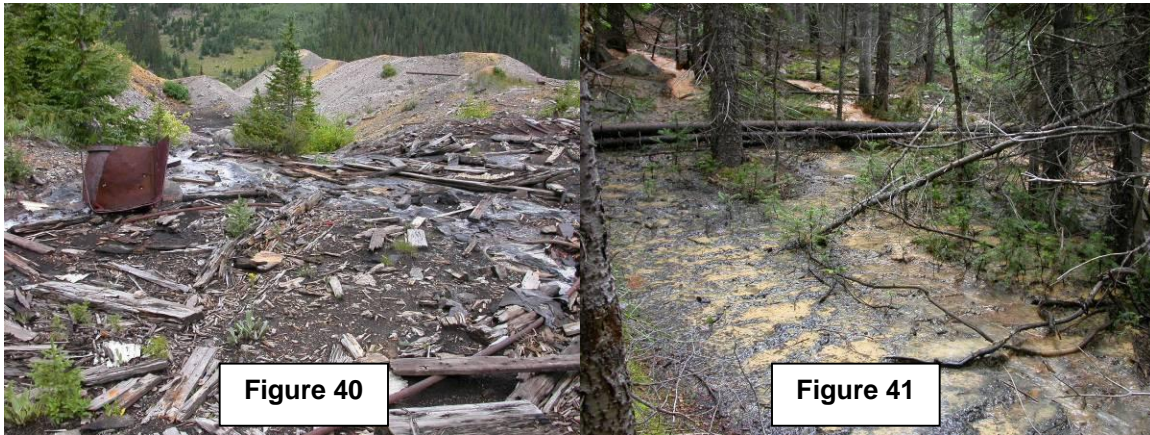


Figure 42 shows the seepage from the stream. This seepage goes on into an area of considerable tailings and eroded waste rock. This is shown in Figure 43.



Not far below the Sts. John Mine, the creek enters a wide meadow. On the west side of the meadow is the Marlin Mine, with a draining adit and eroding waste rock. In the meadow, the creek meanders through significant tailings. Figure 44 shows the Marlin Mine and figure 45 shows some of the tailings in the meadow.



From the meadow, Sts. John Creek drops rapidly to confluence with the Snake River in the town of Montezuma.